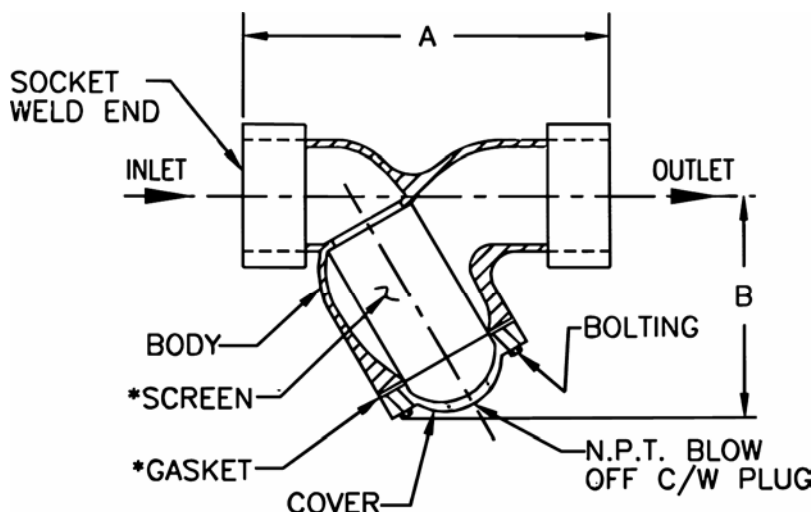


## SERIES 180 SOCKET WELD END CAST STEEL & 316 STAINLESS “Y” STRAINERS

Y-Strainers are to be used in applications where small amounts of solid particulate are expected and where clean-out will be infrequent.



\*Denotes Recommended Spare Parts

SIZE	A	B	BLOW OFF	WEIGHT
1/2" 15 mm	3" 76.2 mm	1-7/8" 47.6 mm	1/4" NPT 8 mm	2 lbs. .91 kg.
3/4" 20 mm	3-7/16" 87.3 mm	2-3/16" 55.6 mm	1/4" NPT 8 mm	3 lbs. 1.4 kg.
1" 25 mm	4-1/16" 103.2 mm	2-17/32" 64.3 mm	1/2" NPT 15 mm	4 lbs. 1.8 kg.
1-1/4" 32 mm	4-23/32" 119.9 mm	3-1/32" 77.0 mm	1/2" NPT 15 mm	6 lbs. 2.7 kg.
1-1/2" 40 mm	5-5/16" 134.9 mm	3-17/32" 89.7 mm	1/2" NPT 15 mm	8 lbs. 3.6 kg.
2" 50 mm	6-5/16" 160.3 mm	4-1/4" 108.0 mm	1/2" NPT 15 mm	13 lbs. 5.9 kg.
2-1/2" 65 mm	7-7/8" 200.0 mm	5-5/16" 134.9 mm	3/4" NPT 20 mm	16 lbs. 7.3 kg.
3" 80 mm	8-7/8" 225.4 mm	5-29/32" 150.0 mm	3/4" NPT 20 mm	23 lbs. 10.4 kg.

Dimensions subject to change without notice, apply for certified drawings.  
Larger sizes are available, please consult the factory or your local sales representative.

## STANDARD CONSTRUCTION

	<b>CAST STEEL</b>	<b>CAST 316 STAINLESS STEEL</b>
Body and Cover	ASTM A216 Class WCB	ASTM A351 Class CF8M
Gasket	Non-Asbestos (High Temperature Material Available)	Teflon
Screen	Stainless Steel	Stainless Steel

**Note: The cover on the 1/2" through 2" is threaded  
The cover on the 2 1/2" through 3" is bolted**

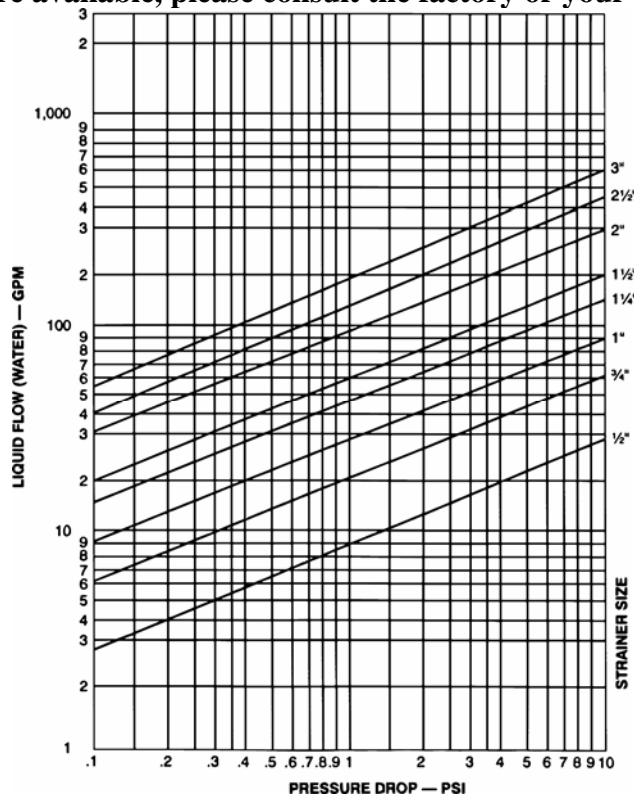
## MAXIMUM OPERATING PRESSURES AND TEMPERATURES

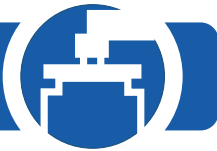
	<b>CAST STEEL &amp; CAST 316 STAINLESS STEEL</b>
Steam	600 psi @ 450°F
W.O.G.	1480 psi @ 100°F

## STANDARD SCREENS

<b>SIZE</b>	<b>SCREEN OPENING</b>
1/2" through 2"	0.032" perforations
2-1/2" through 3"	0.045" perforations

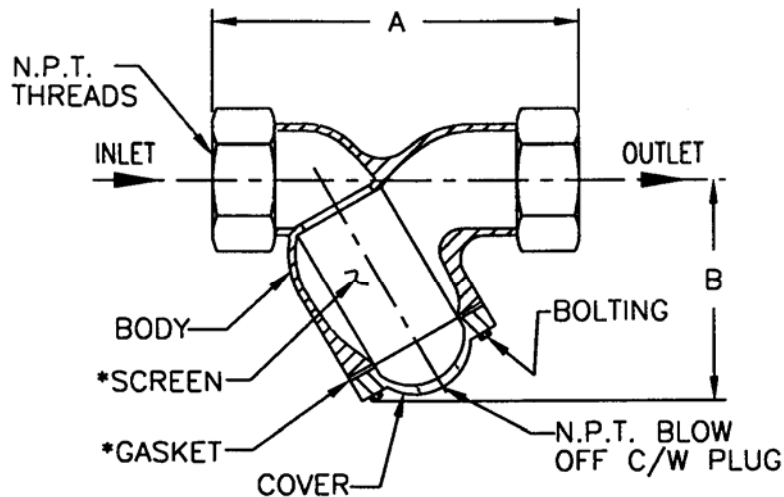
Other screen openings are available, please consult the factory or your local sales representative.





## SERIES 180 THREADED CAST IRON “Y” STRAINERS

Y-Strainers are to be used in applications where small amounts of solid particulate are expected and where clean-out will be infrequent.



\*Denotes Recommended Spare Parts

SIZE	A	B	BLOW OFF	WEIGHT
1/2" 15 mm	3-1/4" 82.6 mm	2-1/4" 57.2 mm	3/8" NPT 10 mm	2-1/2 lbs. 1.1 kg.
3/4" 20 mm	3-3/4" 95.3 mm	2-5/8" 66.7 mm	3/8" NPT 10 mm	3 lbs. 1.4 kg.
1" 25 mm	4-11/16" 119.1 mm	2-3/4" 69.9 mm	1/2" NPT 15 mm	5 lbs. 2.3 kg.
1-1/4" 32 mm	5" 127.0 mm	3-3/4" 95.3 mm	3/4" NPT 20 mm	9 lbs. 4.1 kg.
1-1/2" 40 mm	5-13/16" 147.6 mm	4" 101.6 mm	3/4" NPT 20 mm	10 lbs. 4.5 kg.
2" 50 mm	7-1/8" 181.0 mm	5" 127.0 mm	1" NPT 25 mm	16 lbs. 7.3 kg.
2-1/2" 65 mm	9-5/16" 236.5 mm	6" 152.4 mm	1-1/2" NPT 40 mm	29 lbs. 13.2 kg.
3" 80 mm	10-1/8" 257.2 mm	7" 177.8 mm	1-1/2" NPT 40 mm	38 lbs. 17.2 kg.

Dimensions subject to change without notice, apply for certified drawings.  
Larger sizes are available, please consult the factory or your local sales representative.

## STANDARD CONSTRUCTION

	<b>CAST IRON</b>
Body and Cover	ASTM A126 Class B
Gasket	Non-Asbestos
Screen	Stainless Steel

**Note: The cover on the 1/2" through 2" is threaded  
The cover on the 2 1/2" through 3" is bolted**

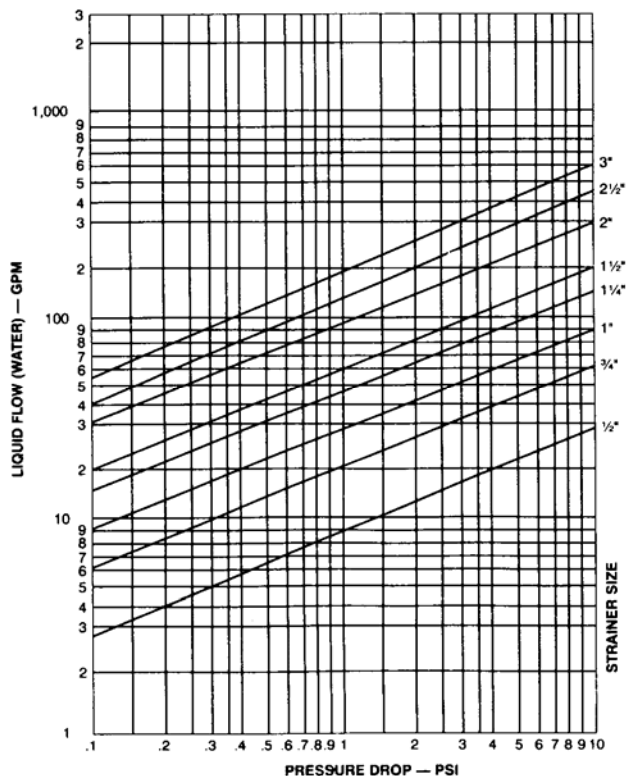
## MAXIMUM OPERATING PRESSURES AND TEMPERATURES

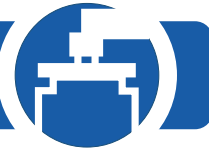
	<b>CAST IRON</b>
Steam	250 psi @ 400°F
W.O.G.	400 psi @ 150°F

## STANDARD SCREENS

SIZE	SCREEN OPENING
1/2" through 2"	20 mesh (0.032" perforations for steels)
2-1/2" through 3"	0.045" perforations

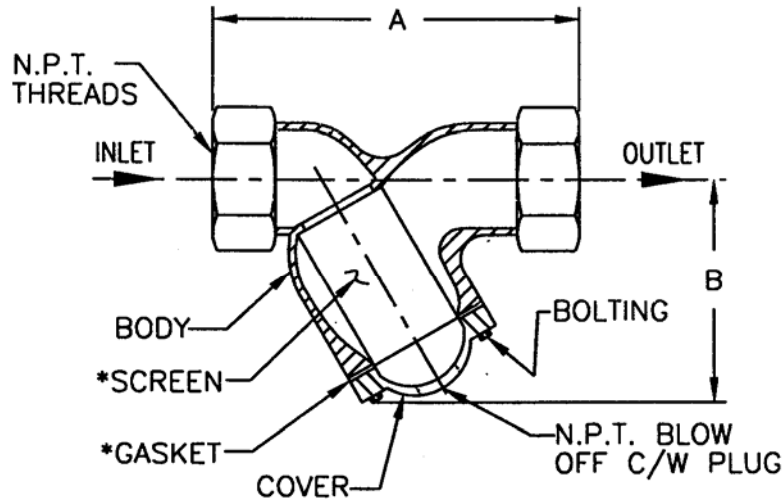
**Other screen openings are available, please consult the factory or your local sales representative.**





## SERIES 180 THREADED CAST STEEL AND CAST 316 STAINLESS “Y” STRAINERS

Y-Strainers are to be used in applications where small amounts of solid particulate are expected and where clean-out will be infrequent.



\*Denotes Recommended Spare Parts

SIZE	A	B	BLOW OFF	WEIGHT
1/2"	3-1/4"	2-1/4"	3/8" NPT	2-1/2 lbs.
15 mm	82.6 mm	57.2 mm	10 mm	1.1 kg.
3/4"	3-3/4"	2-5/8"	3/8" NPT	3 lbs.
20 mm	95.3 mm	66.7 mm	10 mm	1.4 kg.
1"	4-11/16"	2-3/4"	1/2" NPT	5 lbs.
25 mm	119.1 mm	69.9 mm	15 mm	2.3 kg.
1-1/4"	5"	2-3/4"	3/4" NPT	9 lbs.
32 mm	127.0 mm	69.9 mm	20 mm	4.1 kg.
1-1/2"	5-13/16"	4"	3/4" NPT	10 lbs.
40 mm	147.6 mm	101.6 mm	20 mm	4.5 kg.
2"	7-1/8"	5"	1" NPT	16 lbs.
50 mm	181.0 mm	127.0 mm	25 mm	7.3 kg.
2-1/2"	9-5/16"	6"	1-1/2" NPT	29 lbs.
65 mm	236.5 mm	152.4 mm	40 mm	13.2 kg.
3"	10-1/8"	7"	1-1/2" NPT	38 lbs.
80 mm	257.2 mm	177.8 mm	40 mm	17.2 kg.

**Dimensions subject to change without notice, apply for certified drawings.  
 Larger sizes are available, please consult the factory or your local sales representative.**

## STANDARD CONSTRUCTION

	<b>CAST STEEL</b>	<b>CAST 316 STAINLESS STEEL</b>
Body and Cover	ASTM A216 Class WCB	ASTM A351 Class CF8M
Gasket	Non-Asbestos (High temp material available)	Teflon
Screen	Stainless Steel	Stainless Steel

**Note: The cover on the 1/2" through 2" is threaded  
The cover on the 2 1/2" through 3" is bolted**

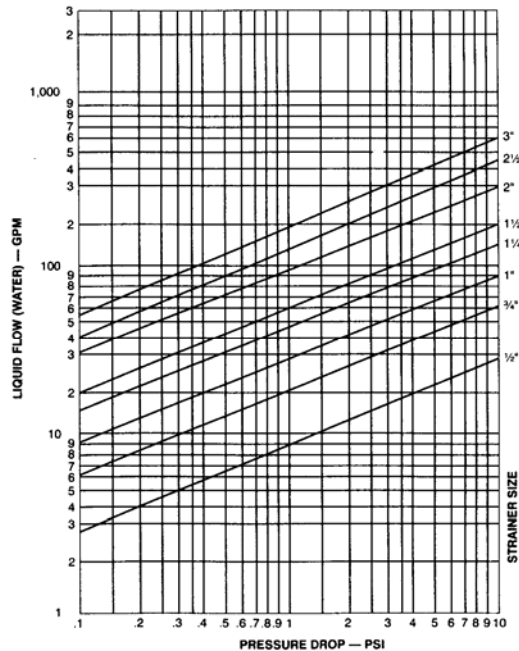
## MAXIMUM OPERATING PRESSURES AND TEMPERATURES

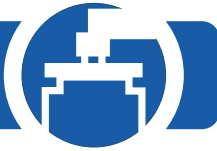
<b>CAST STEEL</b>	<b>CAST 316 STAINLESS STEEL</b>
Steam	600 psi @ 450°F
W.O.G.	1480 psi @ 100°F

## STANDARD SCREENS

<b>SIZE</b>	<b>SCREEN OPENING</b>
1/2" through 2"	20 mesh (0.032" perforations for steels)
2-1/2" through 3"	0.045" perforations

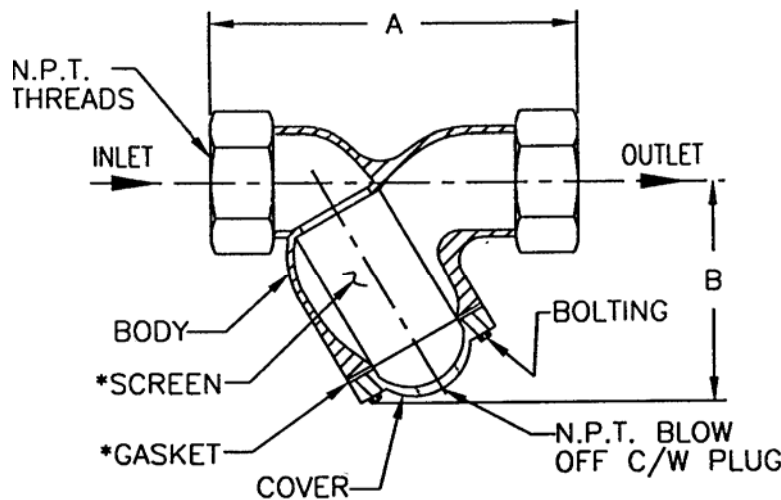
**Other screen openings are available, please consult the factory or your local sales representative.**





## SERIES 180 THREADED CAST BRONZE “Y” STRAINER

Y-Strainers are to be used in applications where small amounts of solid particulate are expected and where clean-out will be infrequent.



\*Denotes Recommended Spare Parts

SIZE	A	B	BLOW OFF	WEIGHT
1/2" 15 mm	3" 76.2 mm	2-5/16" 58.7 mm	3/8" NPT 10 mm	2-1/2 lbs. 1.1 kg.
3/4" 20 mm	3-7/16" 87.3 mm	2-1/2" 63.5 mm	3/8" NPT 10 mm	3 lbs. 1.4 kg.
1" 25 mm	4-1/16" 103.2 mm	3-1/8" 79.4 mm	3/4" NPT 20 mm	6 lbs. 2.7 kg.
1-1/4" 32 mm	4-7/8" 123.8 mm	3-5/8" 92.1 mm	3/4" NPT 20 mm	9 lbs. 4.1 kg.
1-1/2" 40 mm	5-3/4" 146.1 mm	4-1/8" 104.8 mm	3/4" NPT 20 mm	11 lbs. 5.0 kg.
2" 50 mm	6-3/4" 171.5 mm	5" 127.0 mm	3/4" NPT 20 mm	19 lbs. 8.6 kg.
2-1/2" 65 mm	7-1/2" 190.5 mm	5-1/4" 133.4 mm	1-1/4" NPT 32 mm	29 lbs. 13.2 kg.
3" 80 mm	8-1/2" 215.9 mm	6-1/2" 165.1 mm	1-1/4" NPT 32 mm	42 lbs. 19.1 kg.

**Dimensions subject to change without notice, apply for certified drawings.  
Larger sizes are available, please consult the factory or your local sales representative.**

## STANDARD CONSTRUCTION

Body and Cover	ASTM B62
Gasket	Silicon
Screen	Stainless Steel

**Note:** The cover on the 1/2" through 2" is threaded  
The cover on the 2 1/2" through 3" is bolted

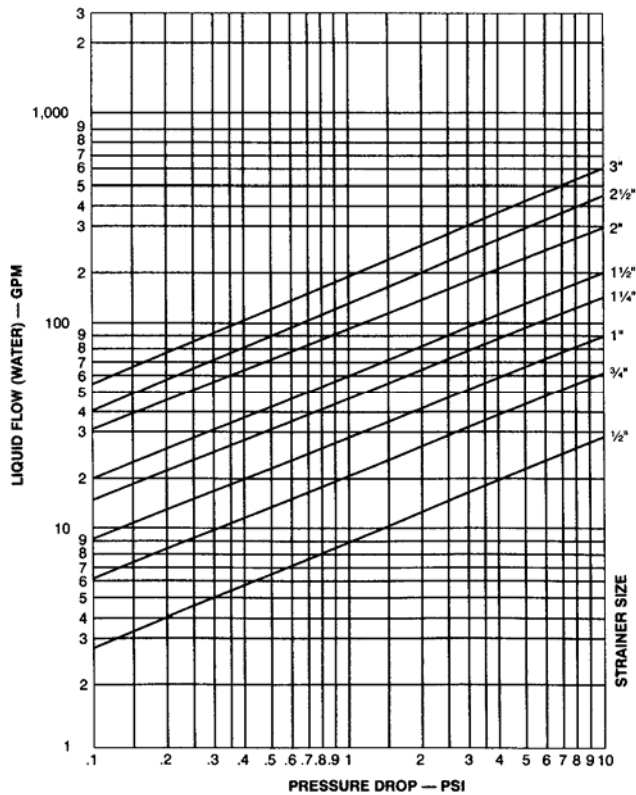
## MAXIMUM OPERATING PRESSURES AND TEMPERATURES

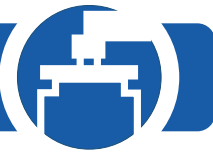
Steam	300 psi @ 450°F
W.O.G.	400 psi @ 150°F

## STANDARD SCREENS

SIZE	SCREEN OPENING
1/2" through 2"	20 mesh
2-1/2" through 3"	0.045" perforations

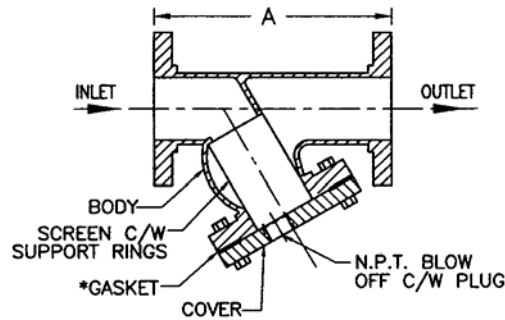
Other screen openings are available, please consult the factory of your local sales representative.





## SERIES 180 FLAT FACE CAST IRON “Y” STRAINER 125 LB. ANSI FLANGE RATING

Y-Strainers are to be used in applications where small amounts of solid particulate are expected and where clean-out will be infrequent



\*Denotes Recommended Spare Parts

SIZE	A	B	BLOW OFF	WEIGHT
2" 50 mm	9-7/8" 250.8 mm	6-1/4" 158.8 mm	1/2" NPT 15 mm	26 lbs. 11.8 kg.
2-1/2" 65 mm	11-1/4" 285.8 mm	7-5/8" 193.7 mm	1" NPT 25 mm	42 lbs. 19.1 kg.
3" 80 mm	12-1/2" 317.5 mm	8-1/4" 209.6 mm	1" NPT 25 mm	49 lbs. 22.2 kg.
4" 100 mm	14-7/8" 377.8 mm	10-1/8" 257.2 mm	1-1/4" NPT 32 mm	86 lbs. 39.0 kg.
5" 125 mm	17-15/16" 455.6 mm	12-1/2" 317.5 mm	1-1/4" NPT 32 mm	121 lbs. 54.9 kg.
6" 150 mm	21-1/16" 535.0 mm	13" 330.2 mm	1-1/2" NPT 40 mm	143 lbs. 64.9 kg.
8" 200 mm	22-9/16" 573.1 mm	13-7/8" 352.4 mm	1-1/2" NPT 40 mm	267 lbs. 121.1 kg.
10" 250 mm	26" 660.4 mm	17-1/8" 435.0 mm	2" NPT 50 mm	309 lbs. 140.2 kg.
12" 300 mm	30-1/2" 774.7 mm	20-1/2" 520.7 mm	2" NPT 50 mm	518 lbs. 235.0 kg.
14" 350 mm	37-3/8" 949.3 mm	29" 736.6 mm	2" NPT 50 mm	896 lbs. 406.4 kg.
16" 400 mm	42-1/2" 1079.5 mm	33" 838.2 mm	2" NPT 50 mm	1346 lbs. 610.5 kg.
18" 450 mm	46-1/8" 1171.6 mm	35-1/2" 901.7 mm	2-1/2" NPT 65 mm	2189 lbs. 992.9 kg.

**Dimensions subject to change without notice, apply for certified drawings.  
Larger sizes are available, please consult the factory or your local sales representative.**

## STANDARD CONSTRUCTION

	<b>CAST IRON</b>
Body and Cover	ASTM A126 Class B
Gasket	Non-Asbestos
Screen	Stainless Steel

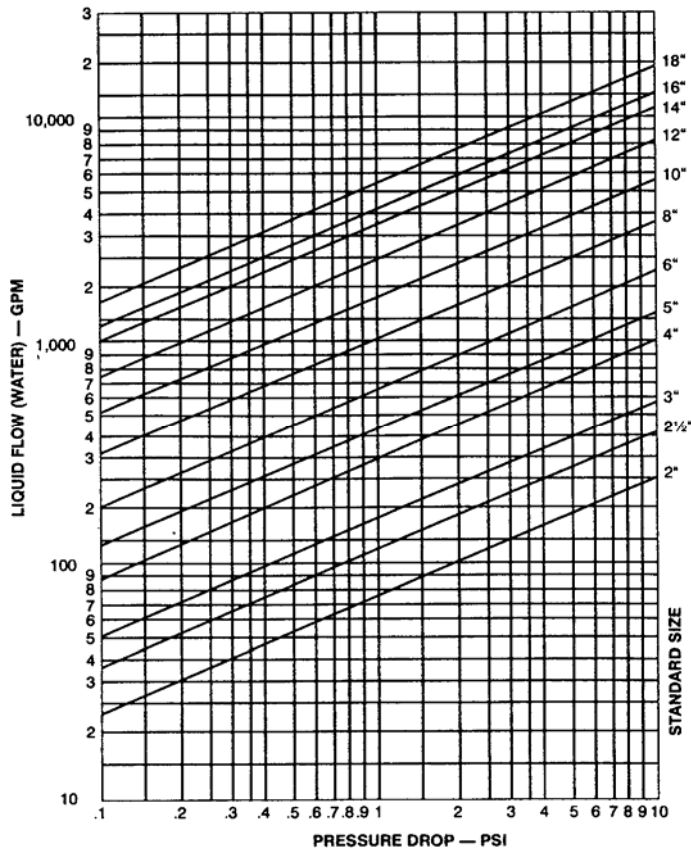
## MAXIMUM OPERATING PRESSURES AND TEMPERATURES

	<b>CAST IRON</b>
Steam	2" through 12" - 125 psi @ 350°F 14" through 18" - 125 psi @ 250°F
W.O.G.	2" through 12" - 200 psi @ 150°F 14" through 18" - 150 psi @ 150°F

## STANDARD SCREENS

SIZE	SCREEN OPENING
2" through 3"	0.045" perforations
4" through 18"	0.125" perforations

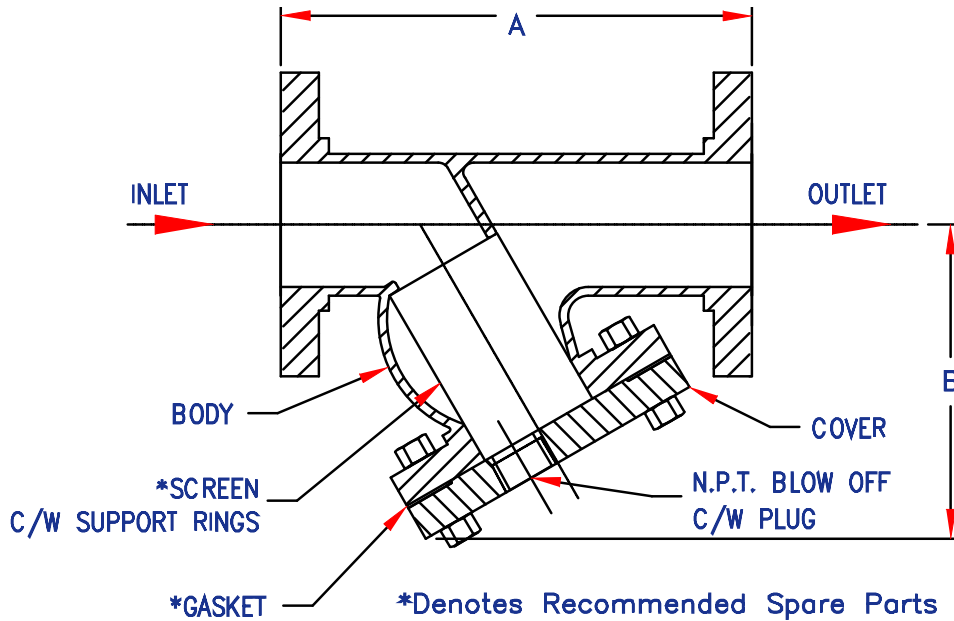
Other screen openings are available, please consult the factory or your local sales representative.



## Series 180 "Y" Strainers

### Raised Face Cast Steel, Cast Bronze & Cast 316 Stainless Steel

### 150 lbs. ANSI Flange Rating



SIZE	A	B	Cv	BLOW OFF	WEIGHT
2" 50 mm	8 5/8" 219.1 mm	4 7/8" 123.8 mm	75 GPM 285 LPM	1/2" NPT 15 mm	25 lbs. 11.3 kg.
2 1/2" 65 mm	10 1/4" 260.4 mm	7 1/2" 190.5 mm	125 GPM 475 LPM	3/4" NPT 20 mm	36 lbs. 16.2 kg.
3" 80 mm	11 5/8" 295.3 mm	7 3/4" 196.9 mm	175 GPM 665 LPM	1" NPT 25 mm	50 lbs. 22.5 kg.
4" 100 mm	14 3/8" 365.2 mm	9 1/8" 231.8 mm	300 GPM 1140 LPM	1 1/2" NPT 40 mm	78 lbs. 35.1 kg.
5" 125 mm	17 5/8" 447.7 mm	11" 279.4 mm	475 GPM 1800 LPM	2" NPT 50 mm	125 lbs. 56.3 kg.
6" 150 mm	18 5/8" 473.1 mm	13 3/8" 339.7 mm	700 GPM 2650 LPM	2" NPT 50 mm	145 lbs. 65.3 kg.
8" 200 mm	24 3/8" 619.1 mm	14 5/8" 371.5 mm	1010 GPM 3825 LPM	2" NPT 50 mm	220 lbs. 99.0 kg.
10" 250 mm	26" 660.4 mm	17 1/4" 438.2 mm	1700 GPM 6435 LPM	2" NPT 50 mm	345 lbs. 155.3 kg.
12" 300 mm	30 3/8" 771.5 mm	21" 533.4 mm	2500 GPM 9465 LPM	2" NPT 50 mm	510 lbs. 229.5 kg.

Notes: Dimensions subject to change without notice. Apply for certified drawings.



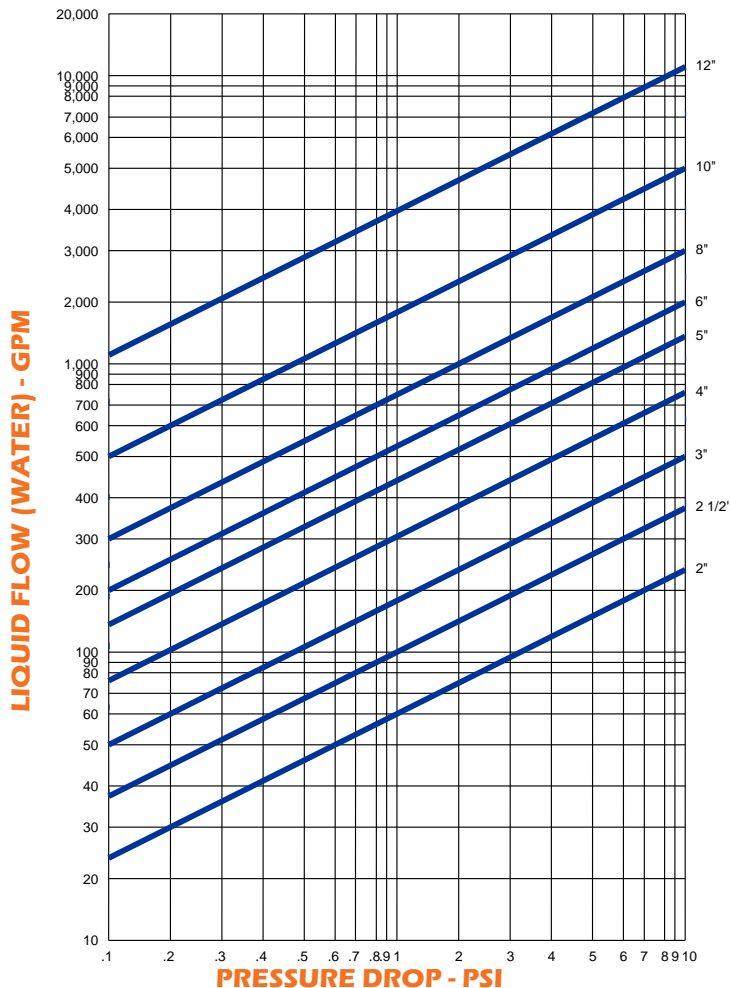
## Series 180 "Y" Strainers

### Raised Face Cast Steel, Cast Bronze & Cast 316 Stainless Steel

### 150 lbs. ANSI Flange Rating

Standard Construction			
	Cast Steel	Cast 316 Stainless Steel	Cast Bronze
<b>Body</b>	ASTM A216 Grade WCB	ASTM A351 Grade CF8M	ASTM B62
<b>Cover</b>	ASTM A216 Grade WCB	ASTM A351 Grade CF8M	ASTM B62
<b>Gasket</b>	Non-Asbestos	Teflon	Silicone
<b>Screen</b>	Stainless Steel	Stainless Steel	Stainless Steel

Maximum Operating Pressures and Temperatures		
	Cast Steel and Cast 316 Stainless Steel	Cast Bronze
Steam	2" through 12" - 150 psi @ 567°F	2" through 12" - 150 psi @ 450°F
W.O.G	2" through 12" - 285 psi @ 100°F	2" through 12" - 225 psi @ 100°F

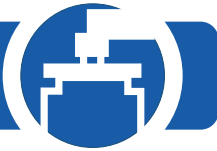


Standard Screens	
Size	Screen Opening
2" through 3"	0.045 perforations
4" through 12"	0.125 perforations

Screens are available in other materials, perforations, and meshes. Please consult the factory

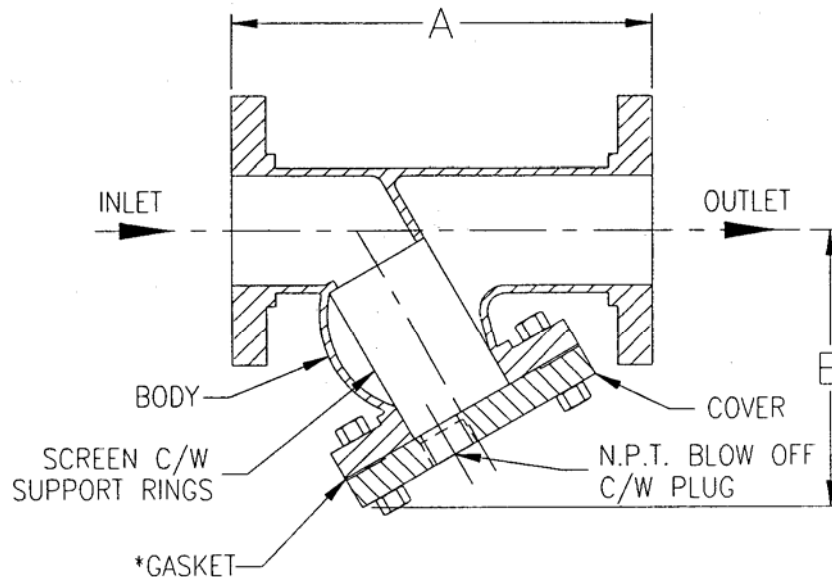


"Engineered Products for Demanding Applications, Performance, and Service"



## SERIES 180 RAISED FACE CAST STEEL & CAST 316 STAINLESS “Y” STRAINERS 300 LB. ANSI FLANGE RATING

Y-Strainers are to be used in applications where small amounts of solid particulate are expected and where clean-out will be infrequent.



\*Denotes Recommended Spare Parts

SIZE	A	B	BLOW OFF	WEIGHT
2" 50 mm	9" 228.6 mm	6-1/8" 155.6 mm	1/2" NPT 15 mm	39 lbs. 17.7 kg.
2-1/2" 65 mm	10-11/16" 271.5 mm	7-7/16" 188.9 mm	1" NPT 25 mm	53 lbs. 24.0 kg.
3" 80 mm	12-9/16" 319.1 mm	9" 228.6 mm	1-1/4" NPT 32 mm	72 lbs. 32.7 kg.
4" 100 mm	14-5/8" 371.5 mm	11" 279.4 mm	1-1/2" NPT 40 mm	138 lbs. 62.6 kg.
5" 125 mm	18-1/2" 470.0 mm	15-3/8" 390.5 mm	2" NPT 50 mm	155 lbs. 70.3 kg.
6" 150 mm	19-3/4" 501.7 mm	15-1/2" 393.7 mm	2" NPT 50 mm	215 lbs. 97.5 kg.

**Dimensions subject to change without notice, apply for certified drawings.  
Larger sizes are available, please consult the factory or your local sales representative.**

## STANDARD CONSTRUCTION

	CAST STEEL	CAST 316 STAINLESS STEEL
Body and Cover	ASTM A216 Grade WCB	ASTM A351 Grade CF8M
Gasket	Non-Asbestos	Teflon
Screen	Stainless Steel	Stainless Steel

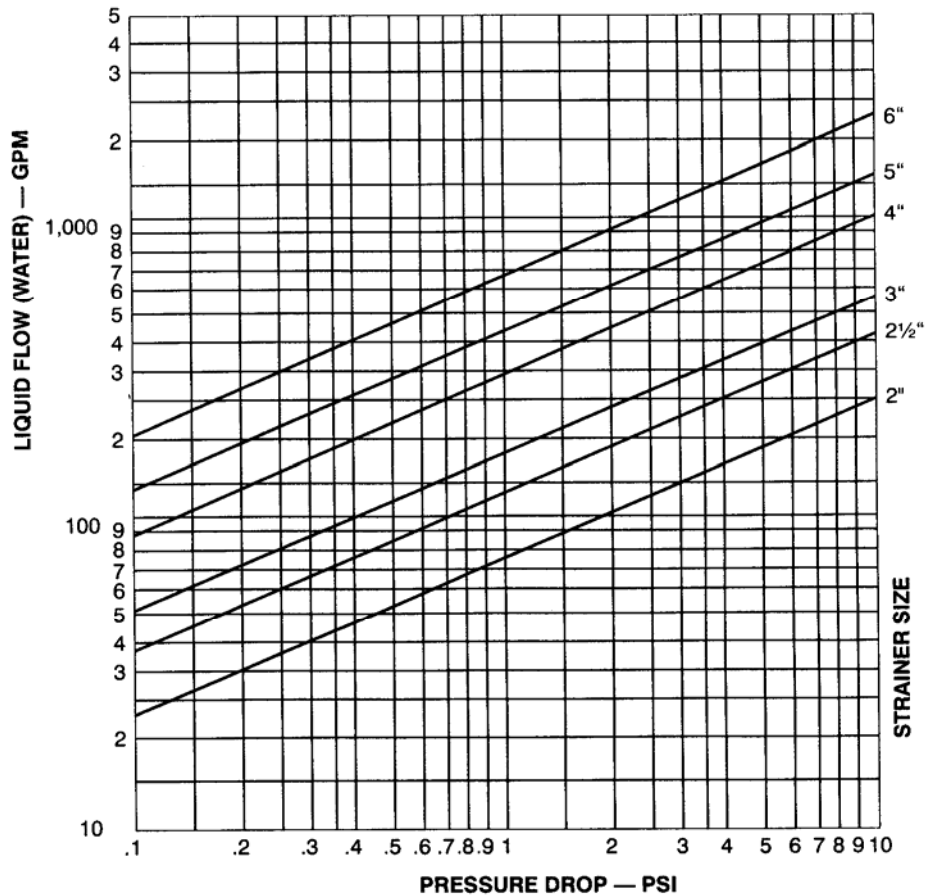
## MAXIMUM OPERATING PRESSURES AND TEMPERATURES

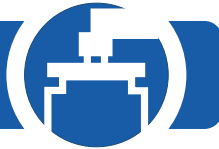
	CAST STEEL	CAST 316 STAINLESS STEEL
Steam	2" through 6" - 300 psi @ 838°F	2" through 6" - 300 psi @ 1125°F
W.O.G.	2" through 6" - 740 psi @ 100°F	2" through 6" - 720 psi @ 100°F

## STANDARD SCREENS

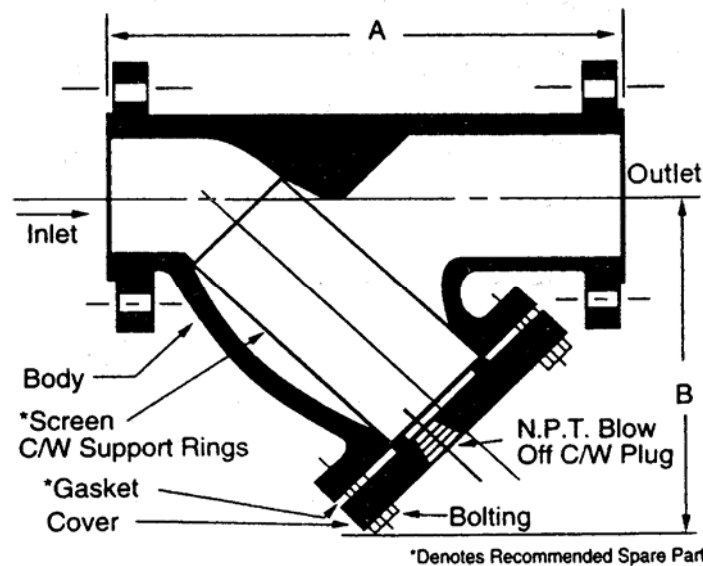
SIZE	SCREEN OPENING
2" through 3"	0.045" perforations
4" through 6"	0.125" perforations

Other screen openings are available, please consult the factory or your local sales representative.





## SERIES 180 RAISED FACE CAST STEEL & CAST 316 STAINLESS “Y” STRAINERS 600 LB. ANSI FLANGE RATING



SIZE	A	B	C <sub>v</sub>	BLOW OFF	WEIGHT
2" 50 mm	11" 279.4 mm	6-1/8" 155.6 mm	75 GPM 285 LPM	1/2" NPT 15 mm	44 lbs. 19.8 kg.
2-1/2" 65 mm	12" 304.8 mm	7-1/4" 184.2 mm	125 GPM 475 LPM	3/4" NPT 20 mm	66 lbs. 29.7 kg.
3" 80 mm	13-1/2" 342.9 mm	8" 203.2 mm	175 GPM 665 LPM	1" NPT 25 mm	83 lbs. 37.4 kg.
4" 100 mm	17-15/16" 455.6 mm	9-3/8" 238.1 mm	300 GPM 1140 LPM	1-1/2" NPT 40 mm	171 lbs. 77.0 kg.
5" 125 mm	22-1/4" 565.2 mm	12-3/8" 314.3 mm	475 GPM 1800 LPM	2" NPT 50 mm	275 lbs. 123.8 kg.
6" 150 mm	25-5/8" 650.9 mm	17-1/4" 438.2 mm	700 GPM 2650 LPM	2" NPT 50 mm	342 lbs. 153.9 kg.
8" 200 mm	31-3/4" 806.5 mm	18-1/2" 469.9 mm	1010 GPM 3825 LPM	2" NPT 50 mm	695 lbs. 312.8 kg.
10" 250 mm	37-11/16" 957.3 mm	21-5/8" 549.3 mm	1700 GPM 6435 LPM	2" NPT 50 mm	1200 lbs. 540.0 kg.
12" 300 mm	45-1/2" 1155.7 mm	26-3/4" 679.5 mm	2500 GPM 9465 LPM	2" NPT 50 mm	1445 lbs. 650.3 kg.

Dimensions subject to change without notice, apply for certified drawings.

## STANDARD CONSTRUCTION

	CAST STEEL	CAST 316 STAINLESS STEEL
Body and Cover	ASTM A216 Grade WCB	ASTM A351 Grade CF8M
Gasket	Non-Asbestos	Teflon
Screen	Stainless Steel	Stainless Steel

## MAXIMUM OPERATING PRESSURES AND TEMPERATURES

	CAST STEEL	CAST 316 STAINLESS STEEL
Steam	2" through 12" - 600 psi @ 838°F	2" through 12" - 600 psi @ 1125°F
W.O.G.	2" through 12" - 1480 psi @ 100°F	2" through 12" - 1235 psi @ 100°F

## STANDARD SCREENS

SIZE	SCREEN OPENING
2" through 3"	0.045 perforations
4" through 12"	0.125 perforations

Other screen openings are available, please consult the factory or your local sales representative.

